

User Instructions

# Doulton® Water Filter Bottle



**Congratulations on purchasing your  
Doulton® Water Filter Bottle!**



Manufactured by:

Doulton Water Filters, Newcastle, Staffordshire,  
ST5 9BT, United Kingdom.

Telephone: +44 (0) 333 340 3600

Email: [filtersales@doulton.com](mailto:filtersales@doulton.com)

Website: [www.doulton.com](http://www.doulton.com)

Doulton® is a trademark registered to Farrey Industrial Ceramics Ltd.

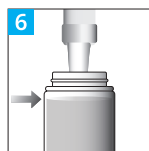
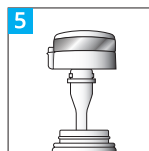
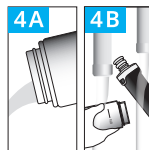
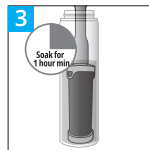
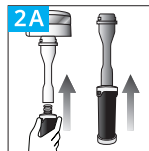
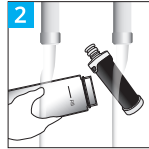
## Preparing Your Bottle to Filter.

### 1. Prime your filter cartridge

- Remove the filter cartridge from the bottle and bag.
- Wash the bottle and white adaptor in warm soapy water & rinse with clean water.
- Rinse the cartridge with cold clean water.
- Grip the filter cartridge by the white 'ears'** and firmly push the cartridge into the white adaptor so that the bottom 'o' ring is just inside the bore. See **2a**.
- Add clean water to the bottle & stand the cartridge in the water for a minimum of 1 hour to wet the filter cartridge. See **3**.  
\* NOTE the initial flow through the filter will improve with a longer soaking time.
- After soaking, throw the water away, rinse the bottle & cartridge thoroughly with clean water. See **4A & 4B**.
- Fit & twist the bayonet on the white adaptor into place in the cap/mouth piece, to connect the filter cartridge. See **5**.
- Fill the bottle to just below the shoulder on the bottle. See **6**.
- Screw the cap/mouthpiece into the top of the bottle with the primed filter. See **7**.
- All done! You can now enjoy great tasting Doulton water everywhere!

### Important Notes

- Always grip the filter cartridge by the white 'ears' to avoid damaging the carbon.**
- The bottle is designed for drinking water 4°C to 40°C only.
- The bottle is not suitable for children under the age of 3 years. The filter is only intended to filter treated municipal mains drinking water.
- Always store spare cartridges, sealed in their packaging in a cool dark place.
- Doulton® Water Filters cannot accept liability if the user instructions are not followed.
- For more information, after sales advice and to purchase replacement cartridges, visit [www.doulton.com](http://www.doulton.com).



### 2. Using your bottle

- A sucking action is required to draw water through the filter in normal use, do not worry if it is a little slow to begin with - the flow improves with use!
- The cartridge contains carbon, so some black particles may be seen in the packaging and bottle, these will disappear after priming.
- If the filter is left unused overnight, discard the water and rinse the bottle & cartridge before refilling to ensure your water always tastes fresh.
- If the bottle filter is to be left unused for longer than 24 hours, remove the cartridge and allow to dry thoroughly on the drainer (at least 24 hours).
- When ready to reuse, repeat the priming process in Section 1.
- The cartridge has a lifetime of 300 Litres (600 fills) dependent upon the quality of your tap water.
- If after continuous use the water flow from your wet filter reduces significantly it is time to replace your cartridge.
- When fitting a new cartridge, follow the priming instructions in section 1.

### 3. Looking after your filter bottle

- Remove and rinse cartridge with clean cold water (no detergent) regularly.
- Hand wash the bottle, mouthpiece, adaptor and lid regularly in warm soapy water, rinse with clean water and dry.

NB: The filter bottle is not designed to be washed in a dishwasher.

### 4 Disposal

Dispose of your used cartridge with your general household waste. If you wish to recycle please check with your local recycling facility. The mount and endcap are Acrylonitrile Butadiene Styrene (ABS) and can be separated by pulling them away from the block.

The bottle is stainless steel, the mouthpiece and lid are polypropylene and silicone. Don't forget that your bottle is completely re-useable - you just need to fit a new cartridge!

If you wish to dispose of your bottle, please check local recycling advice.

#### LEGAL DISCLAIMER.

In the absence of any negligence or other breach of duty by us, the installation and use of this product is entirely at your own risk. You must at all times observe and comply with our instructions (whether set out in the appliance manual or otherwise) relating to the installation and use of this product. We will not be liable nor responsible to you for any loss or damage, legal disputes or conflicts of interests and other adverse events you suffer as a result of your failure to observe or comply with our instructions or otherwise results from your misuse or irresponsible or negligent use of the product or as a result of any events outside of our control. To the maximum extent permitted by any applicable laws, we make no warranty, representation or guarantee (whether express, implied or otherwise) regarding the fitness, merchantability, or suitability of this product for any unreasonable or unforeseeable purpose. This disclaimer does not affect your statutory consumer rights or otherwise restrict or limit any liability that we cannot lawfully exclude under any applicable laws.