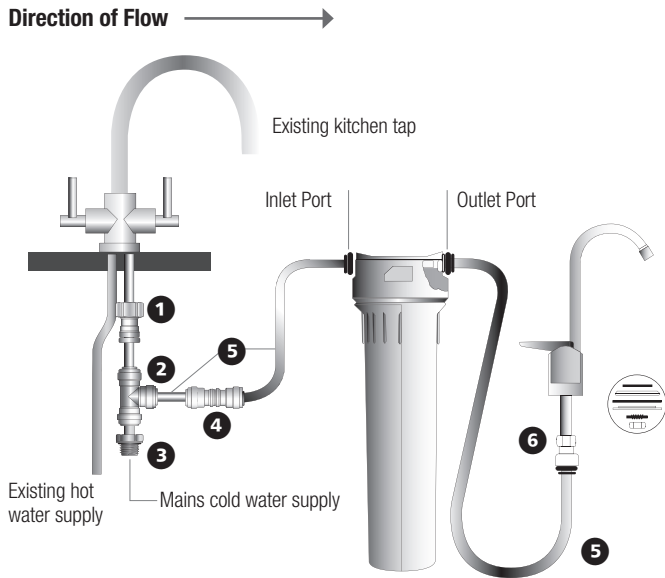


DIY Kit for Single & Multi-stage Filters Installation Instructions

Filter and user tap being installed may vary from illustration:



Content of Pack - refer to illustration:

- 1 1/2" Female Adaptor
- 2 3/8" Tee
- 3 1/2" Male Stem Adaptor
- 4 3/8" Non Return Valve
- 5 1.5 Metres of 3/8" O/D Flexible Tubing
- 6 Push Fit Adaptor to fit tap thread

Note: If you have a different thread connection you will need to obtain alternative fittings to adapt your existing pipework to the 3/8" tube supplied with the system

Installation

Connection to the mains water supply

Turn off the water supply and unscrew the fitting which connects your mains cold water supply to your existing kitchen tap

If your cold water supply pipe fitting has a 1/2" BSP female connection: see figure 1

Connect the 1/2" male stem adaptor **3** to the fitting on the mains cold water supply pipe – do not over tighten

Connect the 1/2" female adaptor **1** to the cold water feed on your existing kitchen tap – do not over tighten

Connect the tee adaptor **2** to the stem adaptor **3** on the mains cold water supply pipe

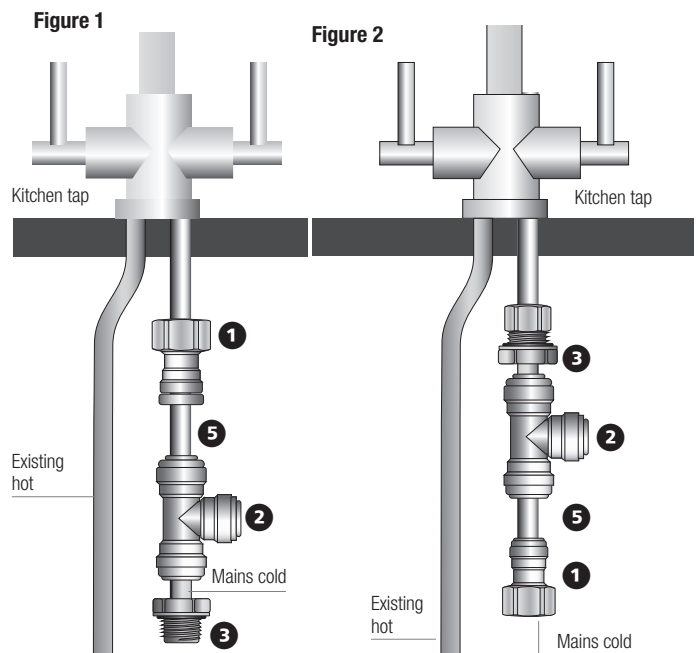
Measure the length and cut the Tube **5** required and use to connect the tee adaptor **2** to the cold water feed on your existing kitchen tap

If your cold water supply pipe fitting has a 1/2" BSP Male connection – see figure 2

Connect the 1/2" female adaptor **1** to the fitting on the mains cold water supply pipe – do not over tighten

Connect the 1/2" male stem adaptor **3** to the cold water feed on your existing kitchen tap – do not over tighten

Connect the tee adaptor **2** to the stem adaptor on the cold water feed on your existing kitchen tap



A GENUINE
WATER FILTER

MADE IN
BRITAIN



Measure the length and cut the tube ⑤ required and use to connect the tee adaptor ② to the mains water supply pipe

Note: It is important that the tube ends are always cut square and that the tubes are pushed into the fittings and housing to a minimum of 18mm (0.75") to ensure a good seal

Assemble and fit your chosen tap into position required using the supplier's instructions and connect using the adaptor supplied with the tap.

Note: You may need to provide a suitable adaptor to enable connection of the 3/8" tubing.

Connecting the filter

Measure and cut the tube ⑤ to the length required to connect the inlet port of the filter head to the tee adaptor ②. The length of the tube must be a minimum of 200mm (8"). Take the cut length of tube and cut it in half

Fit one end of each tube into the non return valve ④

Connect the non return valve ④ to the inlet port of the filter head and the tee adaptor ② with the tubing ⑤. Ensure that the flow arrow on the Non Return Valve ④ is pointing in the direction of the filter head

Measure and cut the tube ⑤ to the length required to connect the outlet port of the filter head to the push fit adaptor on the tap ⑦

Connect the tube to the filter head outlet port and drinking water tap ⑦

Check that the arrows on the non return valve ④ and the ports of the filter head are pointing in the correct direction of flow – towards your drinking water tap ⑦

The system should now be ready for pressurisation

With the tap in the open position, slowly turn on the mains water until flow from the tap has stabilised

Close the tap and ensure that there are no leaks from the installation

When the system has been confirmed as water tight, condition the ceramic filter element in accordance with the instructions supplied with the filter element

Manufactured by:

Doulton Water Filters, Newcastle, Staffordshire, ST5 9BT, United Kingdom.

Telephone: +44 (0) 1782 664420

Fax: +44 (0) 1782 664490

Email: filtersales@doulton.com

Website: www.doulton.com